



Phoebe

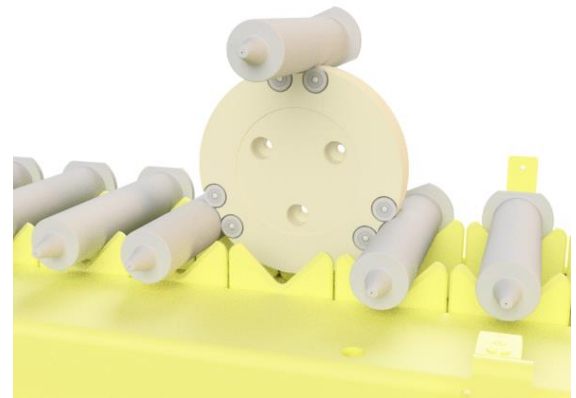
Dimensional inspection of needles of syringes

The Vimec Phoebe inspection system is designed for dimensional inspection of borosilicate glass syringes. With multiple cameras and viewing angles, the system inspects the syringe in the conus, flange and needle area.

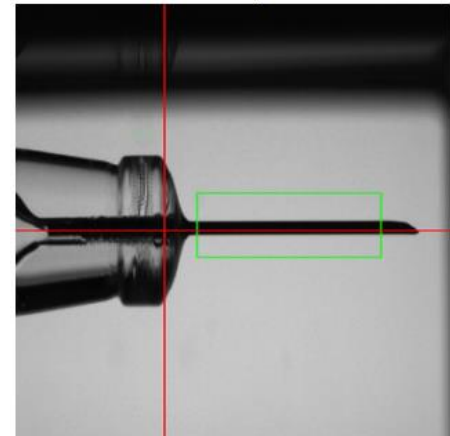
Way of working

Rotowheel The syringes are presented to the cameras using a rotowheel taking the syringe out of the conveyor and positioning the syringes accurately. A drive wheel turns the syringes quickly to have a perfect view from all sides. After the inspection, the rotowheel places the syringe back on to the conveyor.

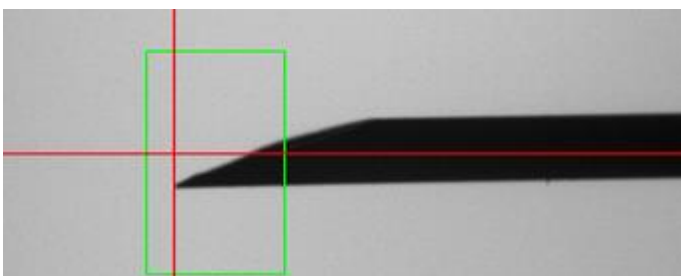
Inspection During the rotation of the syringe, several cameras are used, each of them with a specific area of interest. After the inspection is completed, the results of the inspection are processed in the V-Center system control. Together with data of optional other inspection systems, a trigger signal to the reject unit is generated if the syringe is not accepted with reference to the limits set



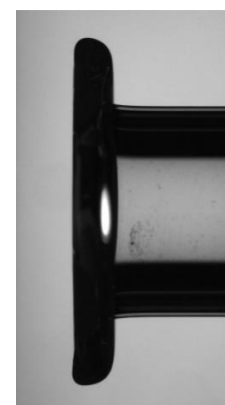
Rotowheel



Glue on Needle

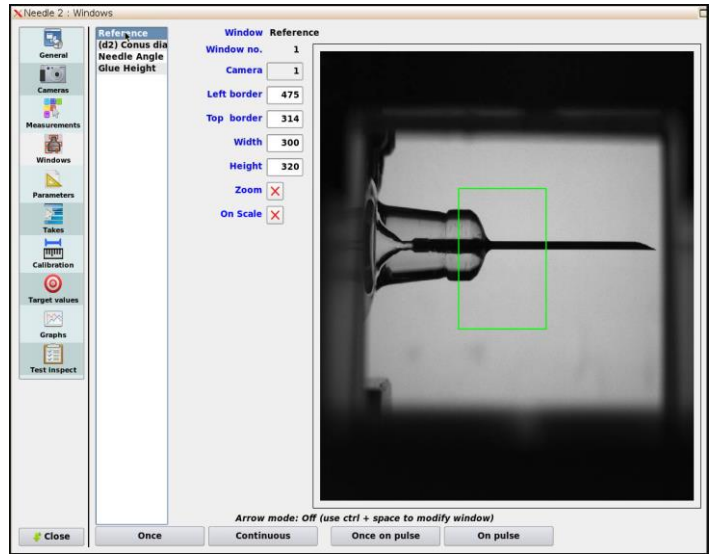
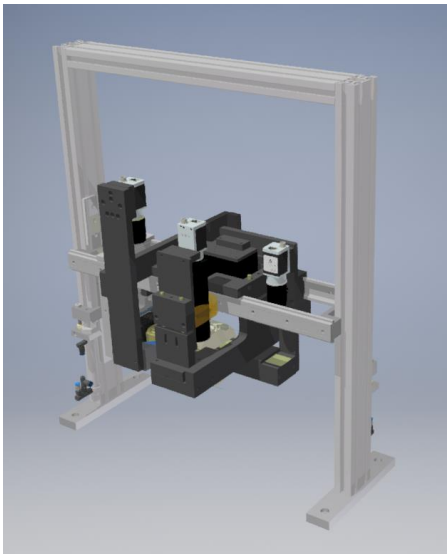


Needle hook



Flange inspection

System impression:



Screenshot Vcenter system control

Key figures:



Max. 120 Parts per minute



3 Cameras



ISO size syringes



After annealing oven



Production optimization



Vimec VCenter control- and data processing software. Statistical tools

Vimec Applied Vision Technology B.V.

With over 25 years experience in the specific market of packaging glass, we are dedicated to design, build and validate visual inspection systems. Vimec offers a multitude in measurement possibilities to cover all your inspection needs.

Interested?

Contact us for more information!



+31 (0)40 – 255 06 07



info@vimec.nl



www.vimec.nl

Vimec Applied Vision Technology is proud member of:

