



Proteus

Dimensional inspection of cartridges

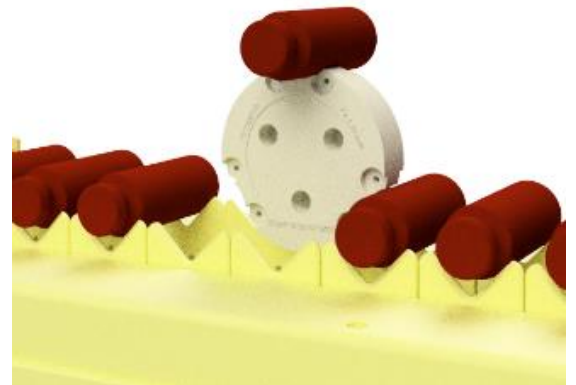
The Vimec Proteus inspection system is designed for dimensional inspection of borosilicate glass cartridges before oven.

Using two cameras, the system inspects the cartridge on outer contour dimensions such as total length, shoulder radius and thread dimensions.

Way of working

Rotowheel The cartridges are presented to the camera using a Rotowheel. The Rotowheel takes the cartridges out of the conveyor and positions the cartridges accurately. A rotation wheel rotates the cartridges quickly to have a view from all sides. After inspection is performed, the Rotowheel places the cartridges back on to the conveyor.

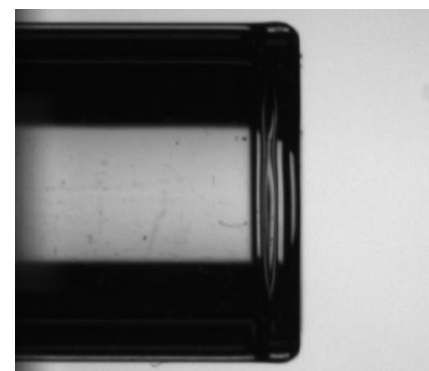
Inspection During the rotation of the cartridge, several cameras are used, each of them with a specific field of view. After the inspection is completed, the results of the inspection are processed in the V-Center system control. Together with data of optional other inspection systems, a trigger a signal to the reject unit is generated if the cartridge is not accepted with reference to the limits set.



Rotowheel

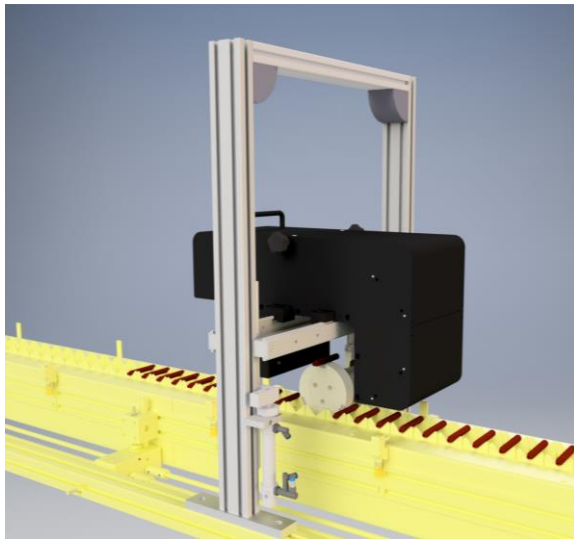


*Side view top of
cartridge*

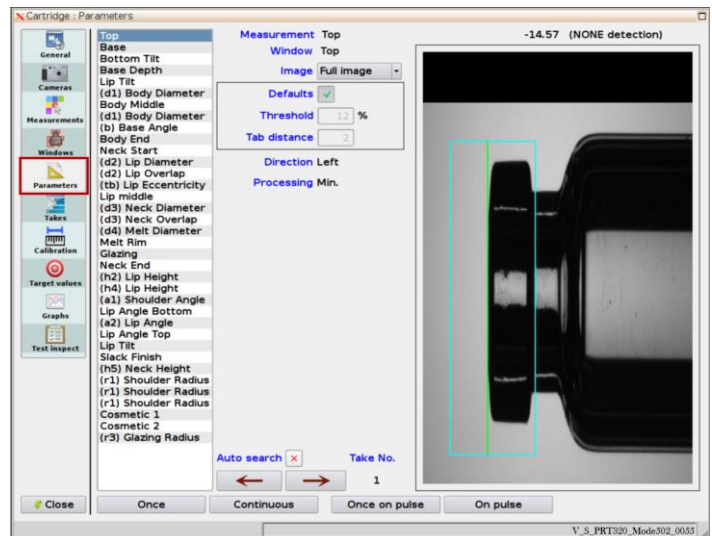


*Side view bottom of
cartridge*

System impression:



Proteus on production line



Screenshot Vcenter system control

Key figures:



Max. 120 parts per minute



2 cameras



ISO size cartridges ¹



Typically before annealing oven



Production optimization



Vimec VCenter software control

Vimec Applied Vision Technology B.V.

With over 25 years experience in the specific market of packaging glass, we are dedicated to design, build and validate visual inspection systems. Vimec offers a multitude in measurement possibilities to cover all your inspection needs.

Interested?

Contact us for more information!



+31 (0)40 – 255 06 07



info@vimec.nl



www.vimec.nl

Vimec Applied Vision Technology is proud member of:



¹Other sizes possible, please contact us!