



Charon

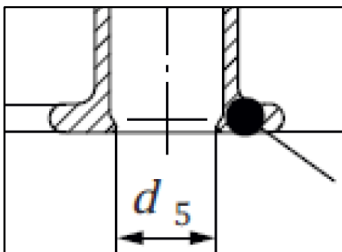
Inner diameter inspection of syringes

The Vimec Charon inspection system is designed for in line inner diameter inspection of glass syringes. The system inspects the minimum inner diameter at the back side of the syringe according to ISO 1040-4:2015, IDT. One camera aimed straight at the back of the syringe is used to take an image.

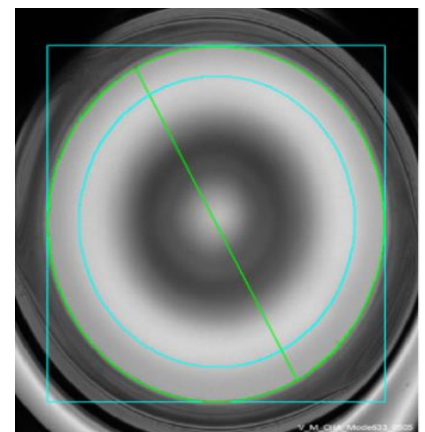
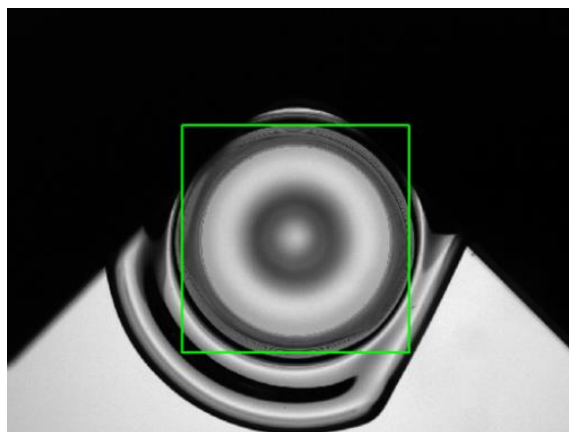
Inspection principle

Lifter The syringes are presented to the camera by a lifter unit, which takes the syringes out of the conveyor. The syringes are accurately positioned to the inspection position by an alignment part. When the syringes are in the inspection position, an image is taken by the camera after which the syringes are placed back on the conveyor.

Inspection One camera is used to inspect the syringe presented to it in the inspection position. After inspection is completed, the results of the inspection are processed in the V-Center system control. If the syringe is not the defined specifications, a trigger signal to the reject unit is generated.

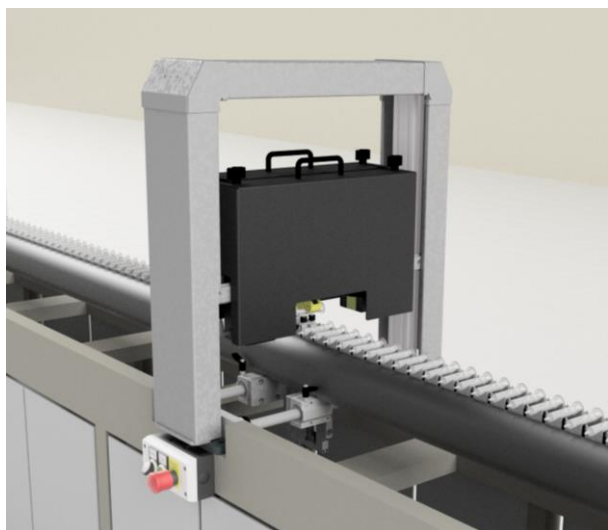


Inner diameter (d_5)
according ISO 1040-
4:2015, IDT



Inner diameter measurement

System overview



Key figures



Max. 120 parts per minute



1 camera + telecentric lens



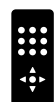
ISO size syringes



Typically before annealing oven



Production optimization




Vimec VCenter software control

Vimec Applied Vision Technology B.V.

With over 30 years of experience in glass inspection and monitoring solutions, we are dedicated to designing, building, and validating visual inspection systems. Vimec offers a multitude of measurement possibilities to cover all your glass packaging inspection needs.

Interested?

Contact us for more information!

 +31 (0)40 – 255 06 07

 sales@vimec.nl

 www.vimec.nl

*Vimec Applied Vision Technology B.V.
proud member of Kestrel Vision Group*