



Cordelia

Dimensional inspection of syringes

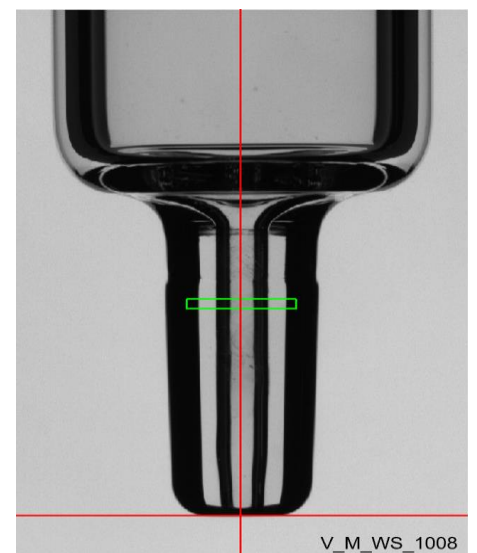
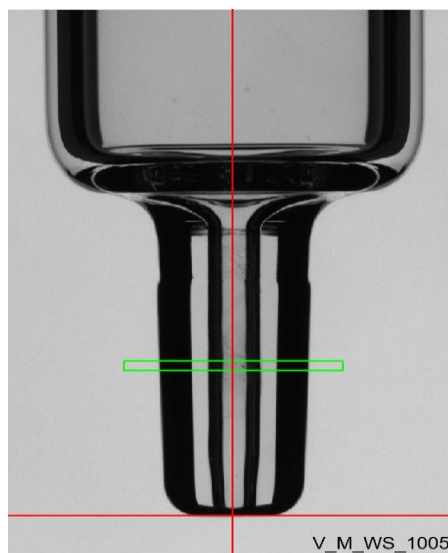
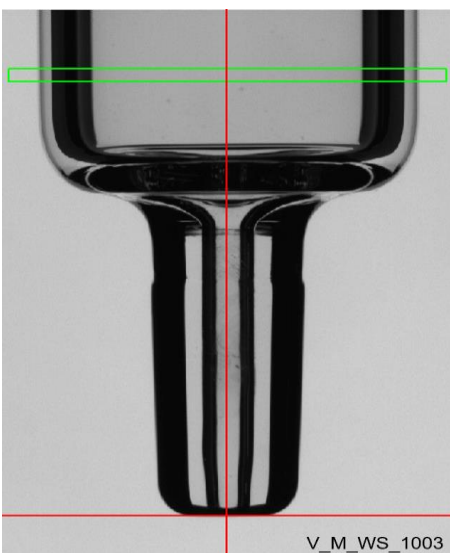
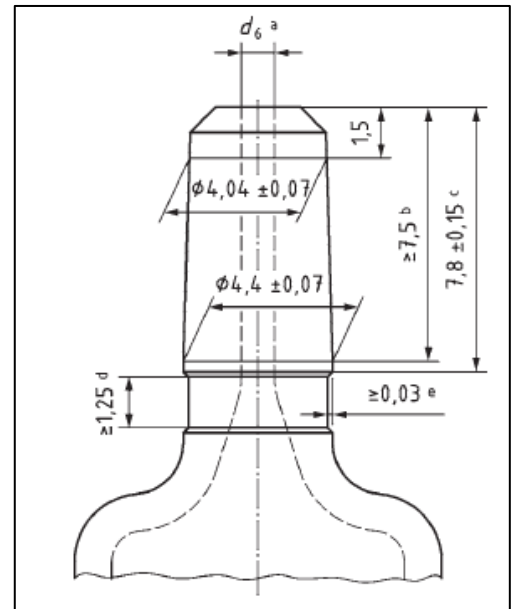
The Cordelia inspection system is designed for dimensional inspection of borosilicate glass syringes. The system is installed in the forming machine and inspects the top of the syringe during the time the syringe is clamped in the chuck of the forming machine

Inspection principle

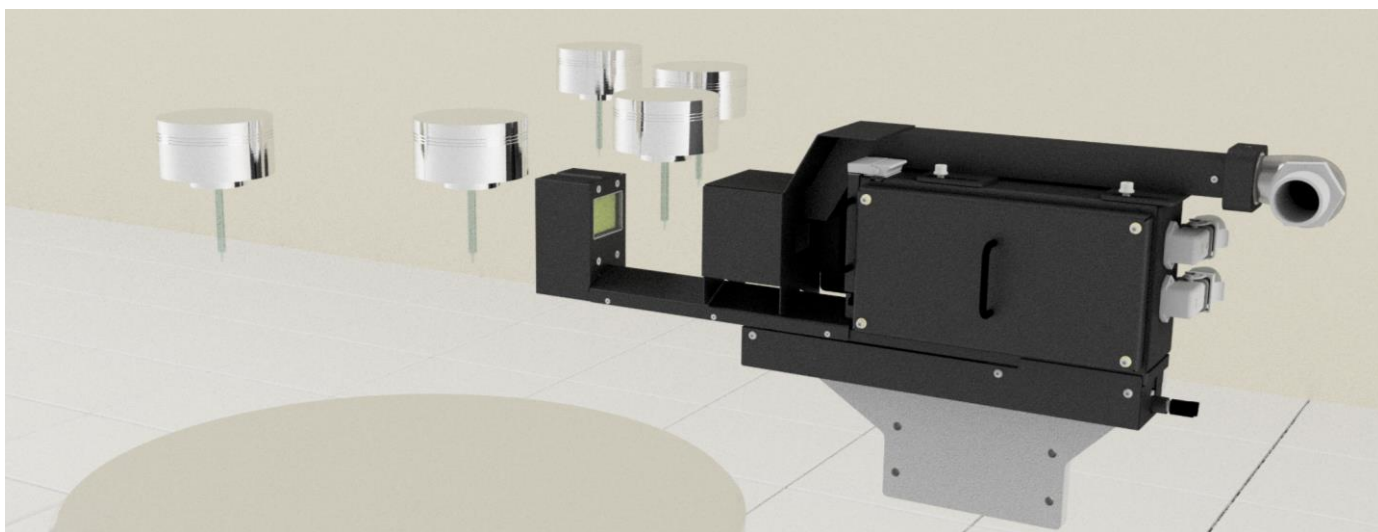
The syringe is presented to the Cordelia system while it is held in the machine chuck. During the rotation of the chuck, multiple images of the top of the syringe are taken by the Cordelia system. Reject criteria can be set on the dimensional aspects of the syringe according to customer requirements. The Cordelia system will provide a reject signal to trigger the reject unit if the syringe dimensions are not within the set tolerances.

The Cordelia inspection system is mounted on guiding rails which allows the operator to easily slide the whole inspection unit out of the forming machine for cleaning and maintenance purposes.

The IP54 rated housing of the Cordelia protects the system against dust, water and oil.



System overview



Key figures



Max. 60 Parts per minute



1 Camera



ISO size syringes



In forming machine



Production optimization



Vimec V-Center - control and data processing software

Vimec Applied Vision Technology B.V.

With over 30 years of experience in glass inspection and monitoring solutions, we are dedicated to designing, building, and validating visual inspection systems. Vimec offers a multitude of measurement possibilities to cover all your glass packaging inspection needs.

Interested?

Contact us for more information!



+31 (0)40 – 255 06 07



sales@vimec.nl



www.vimec.nl

*Vimec Applied Vision Technology B.V.
proud member of Kestrel Vision Group*

