



# Cressida

## Dimensional inspection of syringes

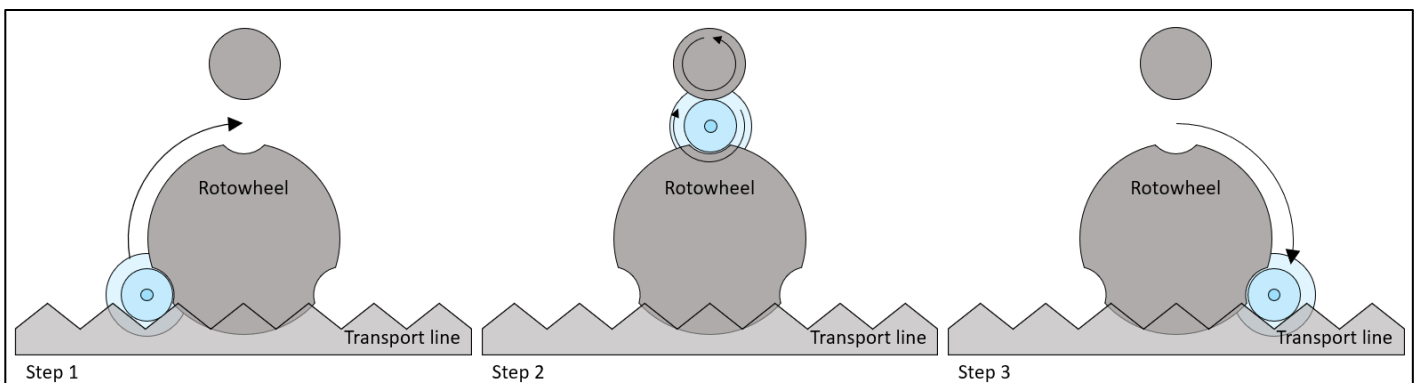
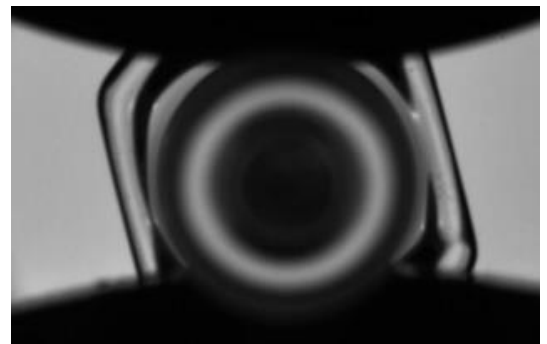
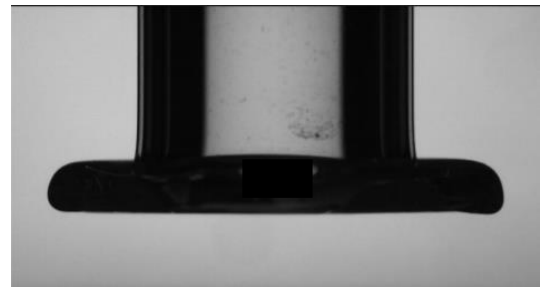
The Cressida inspection system is designed for in line dimensional inspection of borosilicate glass syringes. With multiple cameras, the system inspects the syringe on outer contour dimensions such as the tip and the flange.

### Inspection principle

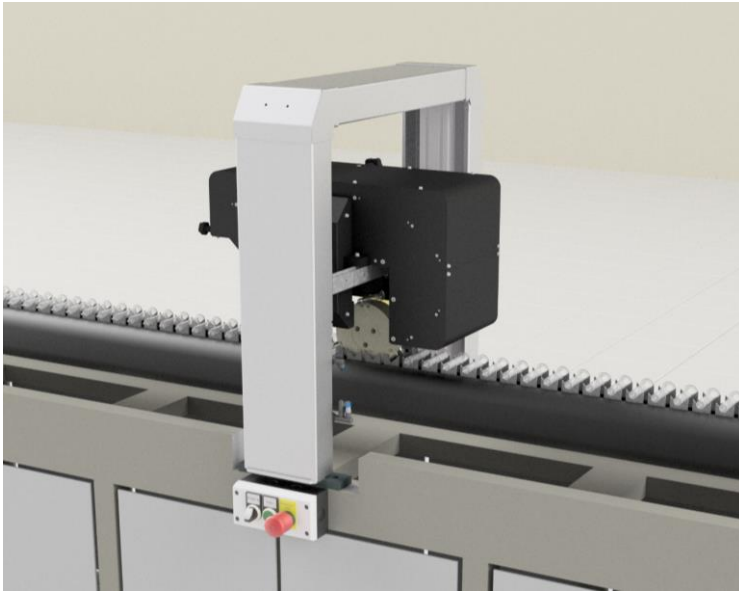
**Rotowheel** The syringes are presented to the cameras using a Rotowheel taking the syringe out of the conveyor and positioning the syringes accurately. A drive wheel turns the syringes quickly to have a perfect view from all sides. After the inspection, the Rotowheel places the syringe back on to the conveyor.

**Inspection** During inspection several cameras used to measure specific areas of interest on the syringe. After the inspection is completed, the results of the inspection are processed in V-Center.

Together with data of other (optional) inspection systems, a trigger a signal to the reject unit is generated if the syringe is out of specification on any given measurement.



## System overview



### Key figures



Max. 120 Parts per minute



3 Cameras



ISO size syringes



Before the oven



Production optimization




Vimec V-Center - control and data processing software

## Vimec Applied Vision Technology B.V.

With over 30 years of experience in glass inspection and monitoring solutions, we are dedicated to designing, building, and validating visual inspection systems. Vimec offers a multitude of measurement possibilities to cover all your glass packaging inspection needs.

### Interested?

Contact us for more information!

 +31 (0)40 – 255 06 07

 sales@vimec.nl

 www.vimec.nl

*Vimec Applied Vision Technology B.V.  
proud member of Kestrel Vision Group*

