



# Rhea

## Cosmetic and dimensional inspection of vials

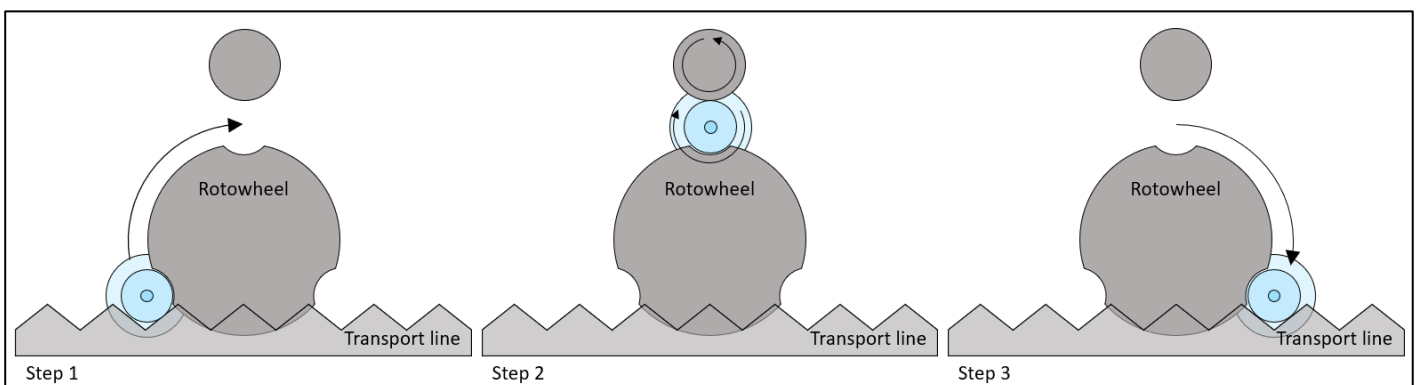
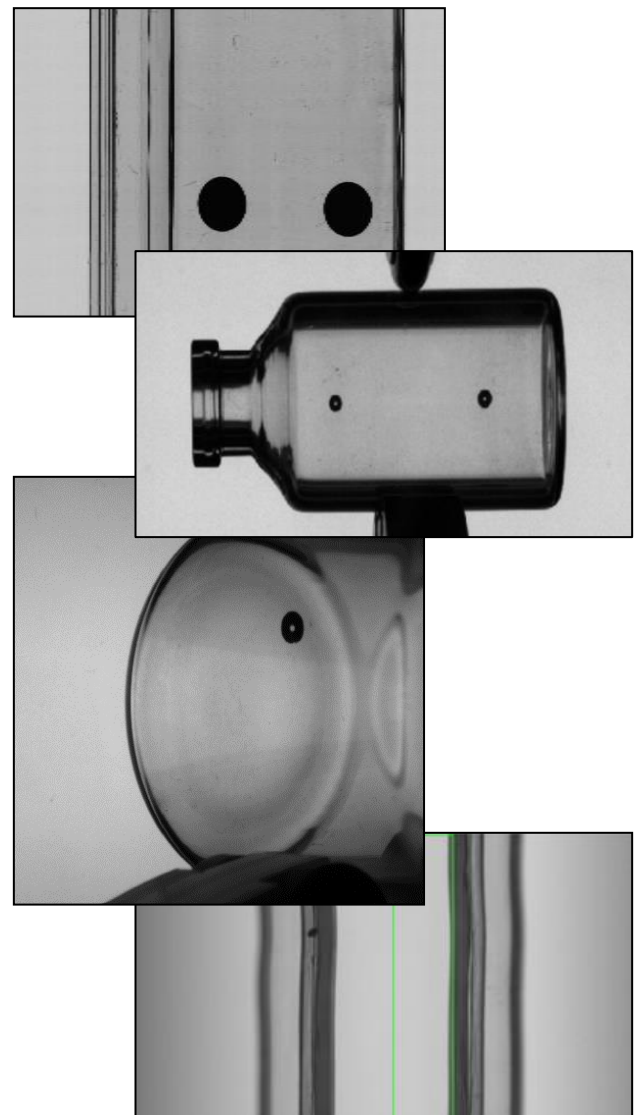
The Rhea inspection system is designed for in line cosmetic and dimensional inspection of borosilicate glass vials. With multiple cameras and viewing angles, the system inspects the vials on cosmetic defects in the bottom, sealing, body, shoulder, and under the lip areas. In addition, dimensional inspection can also be performed.

### Inspection principle

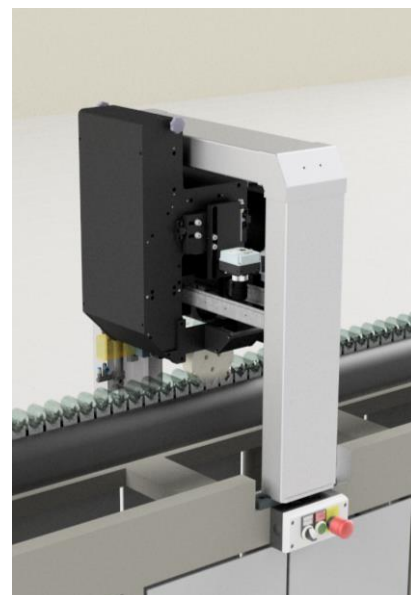
**Rotowheel** The vials are presented to the cameras using a Rotowheel. The Rotowheel takes the vials out of the conveyor and positions the vials accurately. A rotation wheel rotates the vials quickly to have a view from all sides. After inspection is performed, the Rotowheel places the vials back on to the conveyor.

**Inspection** During the rotation of the vial, a combination of area scan and line scan cameras is used to inspect specific areas of the vial. After the inspection is completed, the results of the inspection are processed in.

Together with data of other optional inspection systems, a trigger signal to the reject unit is generated if the vial is not within the set specifications.



- 1 Sealing / surface area
- 2 Under the lip
- 3 Shoulder
- 4 Side view
- 5 Bottom



## Key figures



Max. 120 parts per minute



2 – 7 cameras



ISO size vials



Typically after annealing oven



Production optimization.



Vimec V-Center software control


## Vimec Applied Vision Technology B.V.

With over 30 years of experience in glass inspection and monitoring solutions, we are dedicated to designing, building, and validating visual inspection systems. Vimec offers a multitude of measurement possibilities to cover all your glass packaging inspection needs.

### Interested?

Contact us for more information!

*Vimec Applied Vision Technology B.V.  
proud member of **Kestrel Vision Group***

 +31 (0)40 – 255 06 07

@ [sales@vimec.nl](mailto:sales@vimec.nl)

 [www.vimec.nl](http://www.vimec.nl)