



Telesto

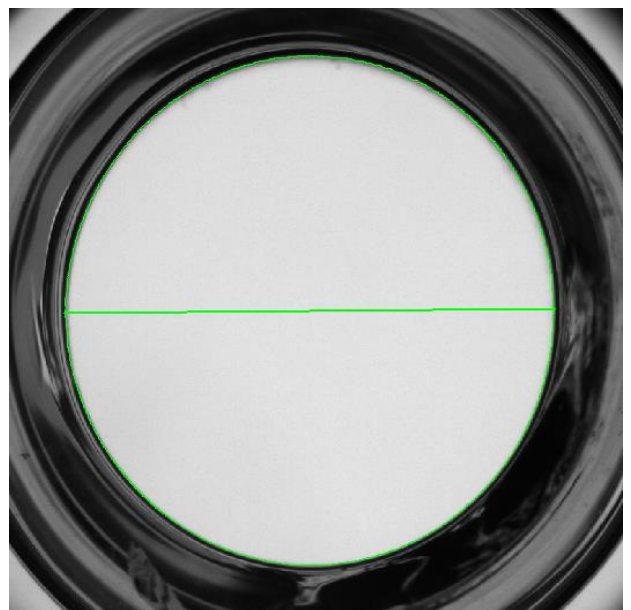
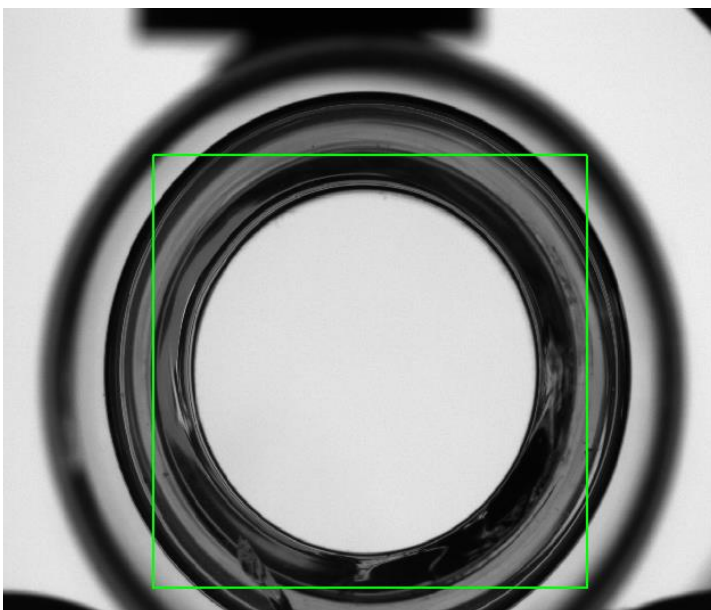
Inner diameter inspection of vials

The Telesto inspection system is designed for inner diameter inspection of borosilicate glass vials. One camera aimed perpendicular to the vial is used to take the image for inspection.

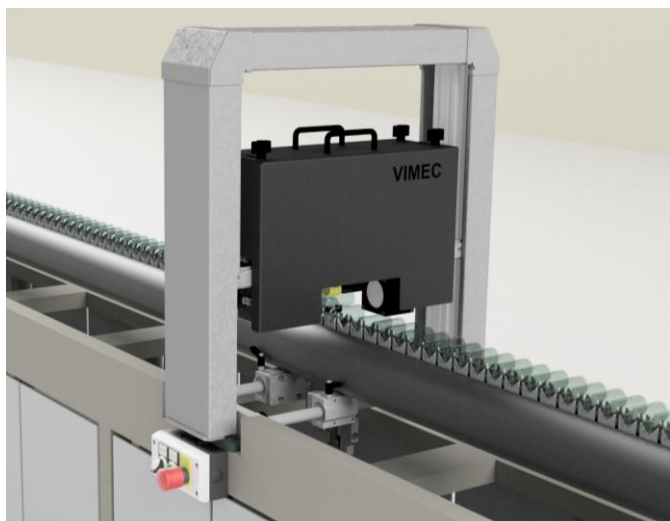
Inspection principle

Lifter The vials are presented to the cameras using a lifting unit taking the vials out of the conveyor. The vial is correctly aligned into the inspection position. After inspection is performed, the lifter unit places the vials back on to the conveyor.

Inspection Once the vial is lifted in a stable position, inspection is being performed. When inspection is done, the results are processed in V-Center. Together with data of other (optional) inspection systems, a trigger signal to the reject unit is generated if the vial is not within the set specifications.



System overview



Key figures



Max. 120 parts per minute



1 camera with telecentric lens



ISO size vials



Typically before annealing oven



Production optimization



Vimec V-Center software control

Vimec Applied Vision Technology B.V.

With over 30 years of experience in glass inspection and monitoring solutions, we are dedicated to designing, building, and validating visual inspection systems. Vimec offers a multitude of measurement possibilities to cover all your glass packaging inspection needs.

Interested?

Contact us for more information!



+31 (0)40 – 255 06 07



sales@vimec.nl



www.vimec.nl

*Vimec Applied Vision Technology B.V.
proud member of Kestrel Vision Group*

