



Phoebe

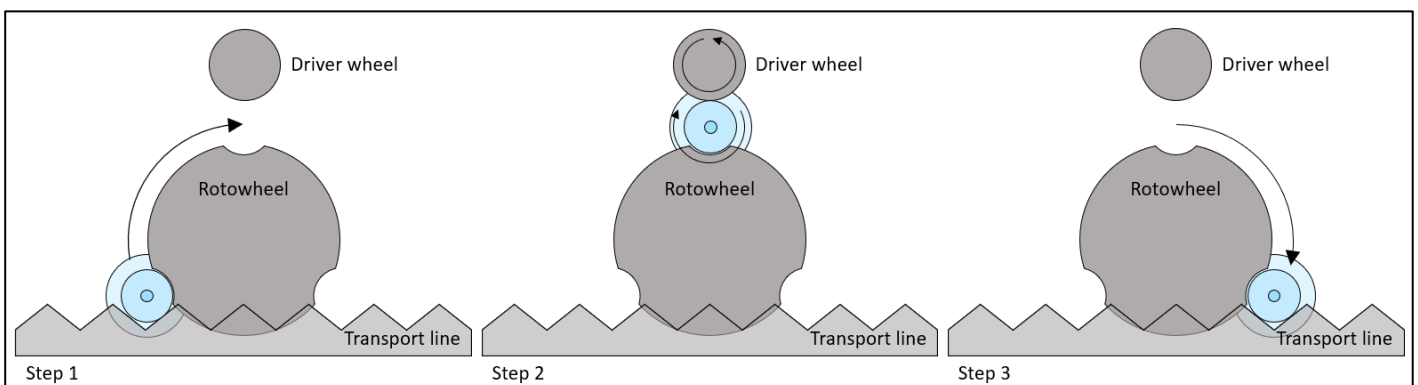
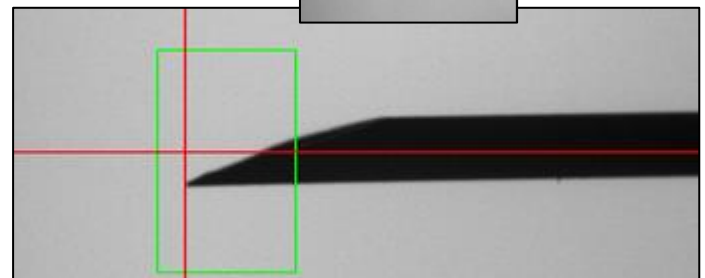
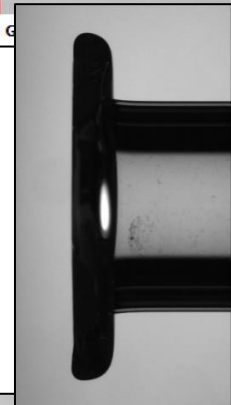
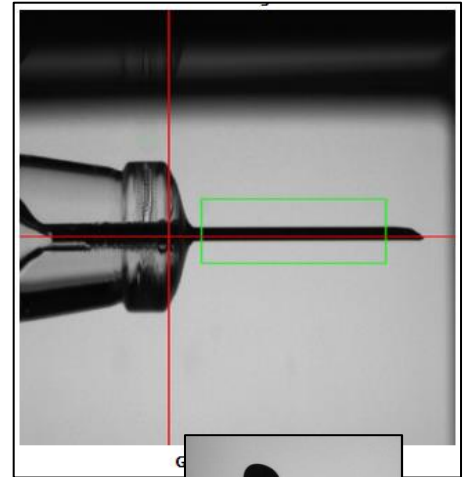
Dimensional inspection of needles of syringes

The Vimec Phoebe inspection system is designed for dimensional inspection of borosilicate glass syringes. With multiple cameras and viewing angles, the system inspects the syringe in the conus, flange and needle area.

Way of working

Rotowheel The syringes are presented to the cameras using a rotowheel taking the syringe out of the conveyor and positioning the syringes accurately. A drive wheel turns the syringes quickly to have a perfect view from all sides. After the inspection, the rotowheel places the syringe back on to the conveyor.

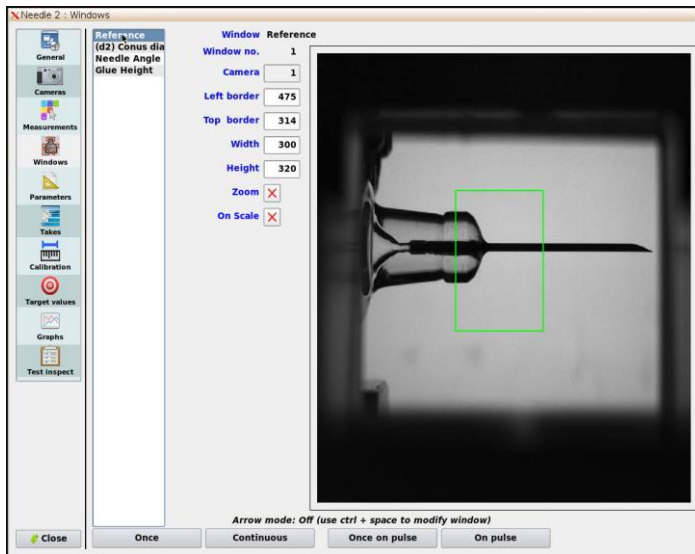
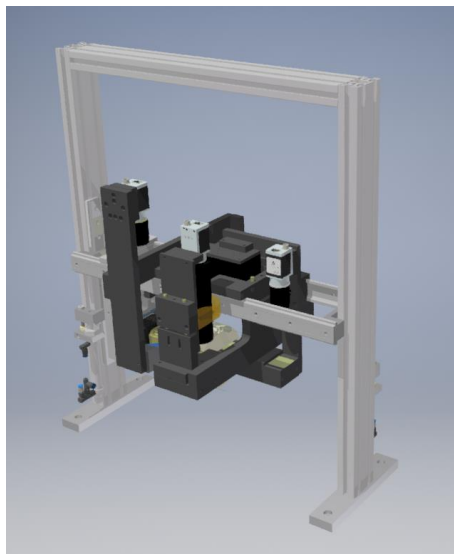
Inspection During the rotation of the syringe, several cameras are used, each of them with a specific area of interest. After the inspection is completed, the results of the inspection are processed in the V-Center system control. Together with data of optional other inspection systems, a trigger a signal to the reject unit is generated if the syringe is not accepted with reference to the limits set





Leading in glass inspection & monitoring solutions

System impression:



Screenshot Vcenter system control

Key figures:



Max. 120 Parts per minute



3 Cameras



ISO size syringes



After annealing oven



Production optimization



Vimec VCenter control- and data processing software.

Statistical tools

Vimec Applied Vision Technology B.V.

With over 30 years of experience in glass inspection and monitoring solutions, we are dedicated to designing, building, and validating visual inspection systems. Vimec offers a multitude of measurement possibilities to cover all your glass packaging inspection needs.

Interested?

Contact us for more information!

+31 (0)40 – 255 06 07

sales@vimec.nl

www.vimec.nl

*Vimec Applied Vision Technology B.V.
proud member of Kestrel Vision Group*

